

# SPECTRUM

COLLECTION

With this collection, you will find **Ray Path**, a basic product, **Light Stream with pastel colors**, and **Color Sparkle**, an extra product with **double colors**.

**VOXFLO®**  
*passion and purpose*

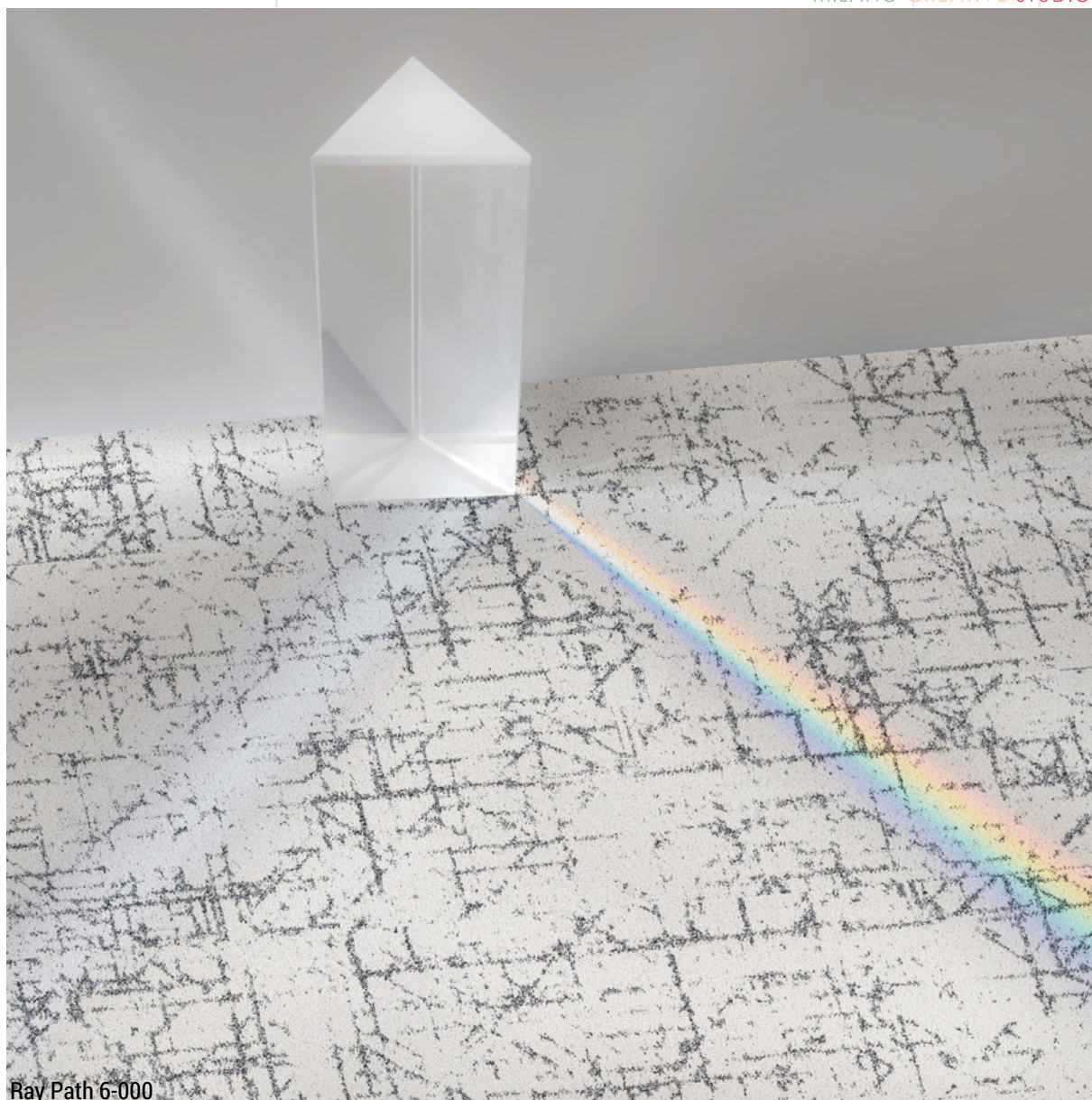


# 01.

## OUR GOAL

The natural sunlight when hits a translucent surface can get reflected pure as before or it can reveal its secret composition by breaking down into various frequencies of the visible **Spectrum**. **The Collection** is consequently composed as follows: **Ray Path** as pure light, **Light Stream** stands as a single color reflection, meanwhile **Color Sparkle** represents a more complex refraction.

VOXFLO<sup>R</sup>  
MILANO CREATIVE STUDIO



Ray Path 6-000

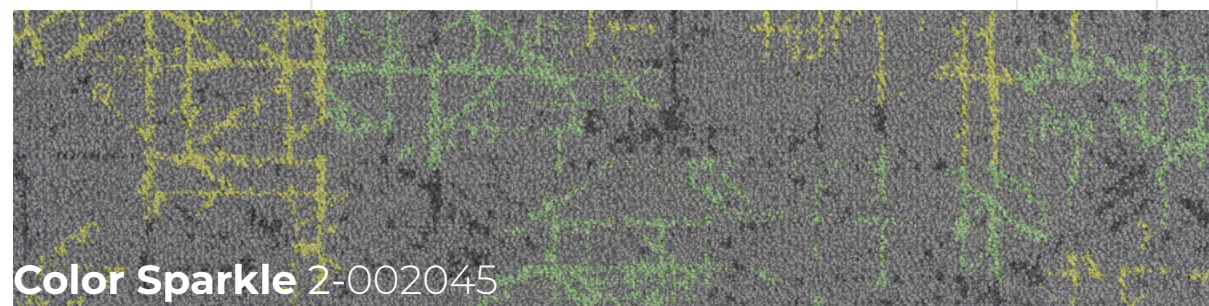
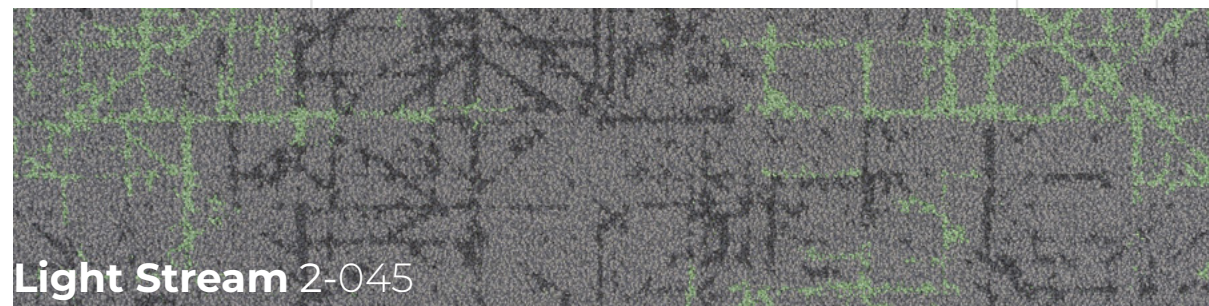
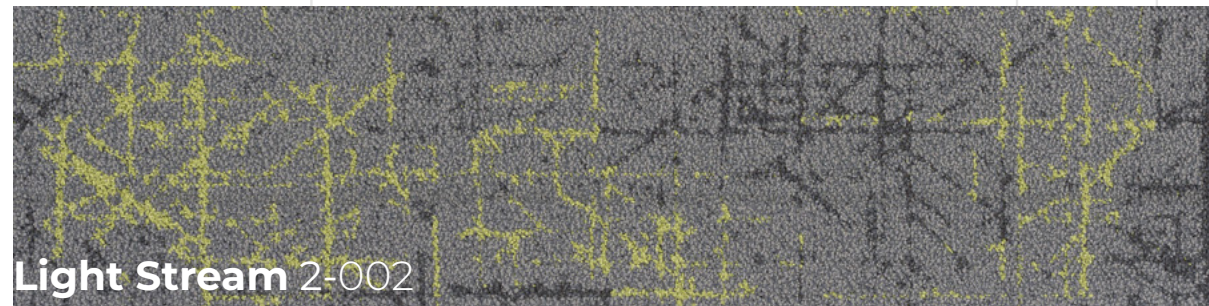
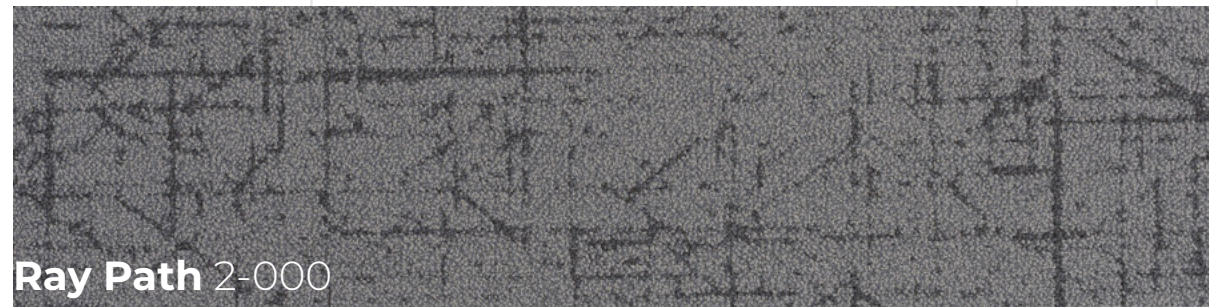




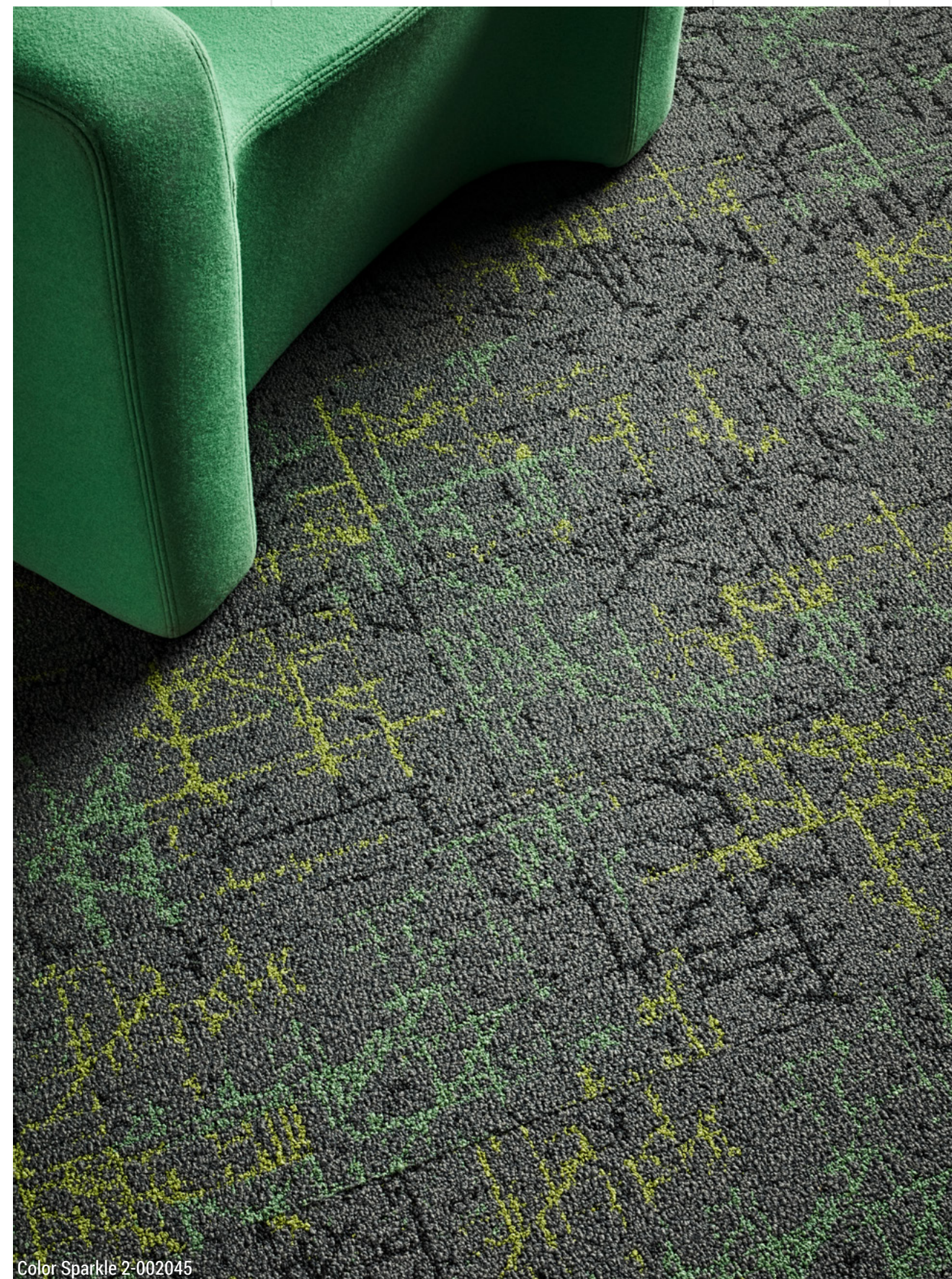


Ray Path 2-000, Light Stream 2-002, Light Stream 2-045, Color Sparkle 2-002045





**Ray Path, Light Stream and Color Sparkle represent three levels of creativeness. The first** can be considered **as a basic product**, more simple and pure, **the second** adds **a standard color accent level**, whereas **the third one** by combining **two color accents** guarantees an extraordinary and unique design approach with astonishing visual impact. The designers **can freely decide how to combine** and merge the carpet tiles adjusting the color level on their taste and to their project target.





## 02.

### BASIC PRODUCT

Light is energy, light is everything. Sunlight is the limitless power that runs our planet, our energy source, and what reveals beauty to our eyes. Ray Path is a tribute to the particles of light which, after traveling through space at 300,000 km/s, hit the Earth giving us life and warmth.

As the basics of optics say, propagation of light follows a linear direction, so Ray Path offers a growing sequence of shades in neutral tones providing different contrast levels between its background colors and the graphic pattern among all the 8 SKU.

# RAY PATH

## NATURAL SUNLIGHT

### WARM AND PURE





Ray Path 5-000









Ray Path 4-000, 5-000





Ray Path 7-000



Ray Path 7-000



Ray Path 7-000





# LIGHT STREAM

## DIRECTION CHANGES

## ESSENCE REMAINS

### 03.

#### ACCENT COLOR

When a ray of light meets an object that doesn't absorb its radiation, it bounces back. That's when **Light Stream** is generated. It is **similar** to **Ray Path** but fundamentally **different**. Indeed, by bouncing, the light attenuates its intensity and **acquires a chromatic dominance** typical of the object hit.

Light Stream follows a general pattern design similar to Ray Path but with the introduction of an accent color. Over a medium gray background 12 delicate accents provide to the pattern design a positive shock, generating an additional lights flow.





Light Stream 2-094, Light Stream 2-114

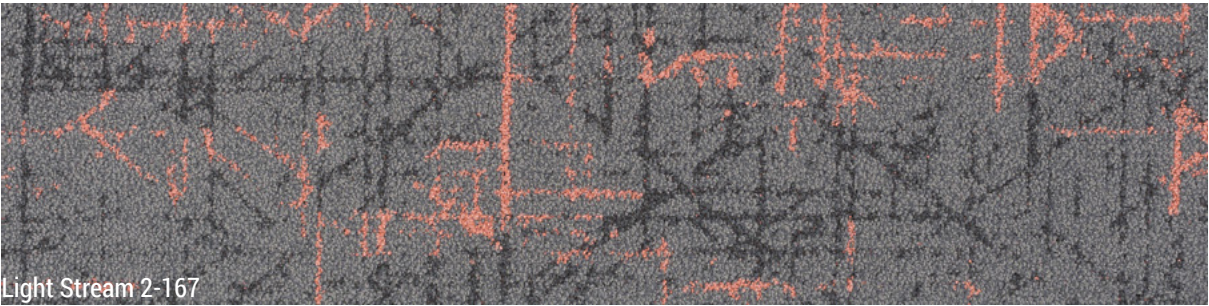




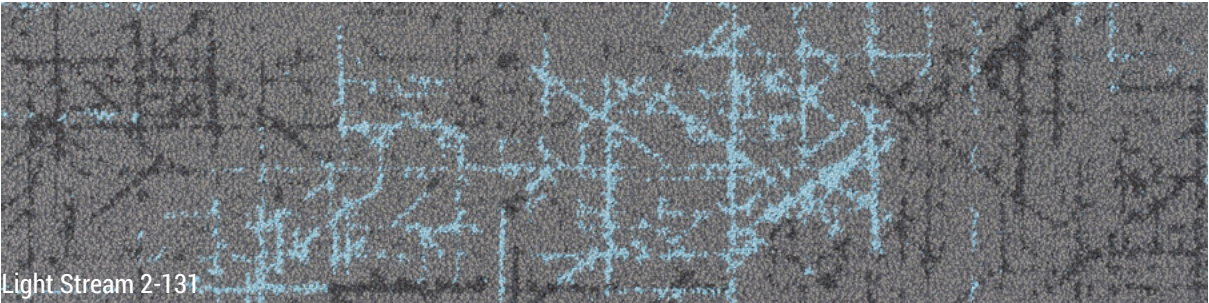
Ray Path 2-000, Light Stream 2-167, Light Stream 2-131



Light Stream 2-167, Light Stream 2-131



Light Stream 2-167



Light Stream 2-131



# 04.

## DOUBLE ACCENT

When the ray of light hits a translucent surface, it can pass through it slowing down its wave speed, revealing a surprising result. Color Sparkle is the revelation of the natural composition, composed by a whole rainbow of colors.

Color Sparkle is the most creative element of the collection. Here the colors melt in tone on tone combinations, generating a unique, strong and, stunning visual impact.

# COLOR SPARKLE

## NATURAL COMPOSITION

# STRONG AND IMPACTFUL





Ray Path 2-000, Light Stream 2-188, Light Stream 2-189, Color Sparkle 2-188189

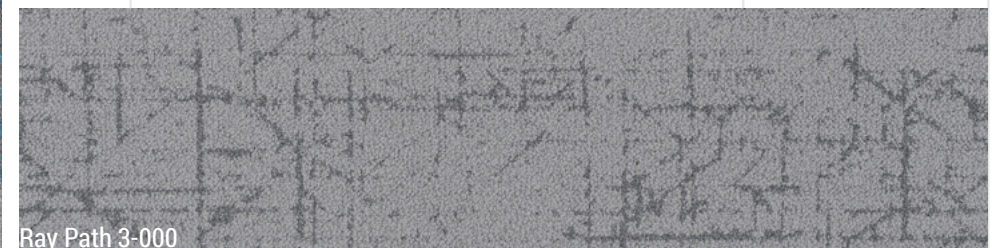




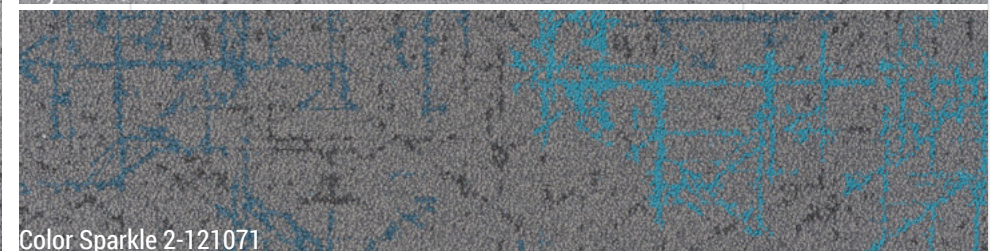
Ray Path 3-000, Color Sparkle 2-121071



Color Sparkle 2-121071



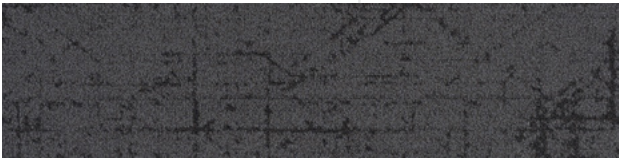
Ray Path 3-000



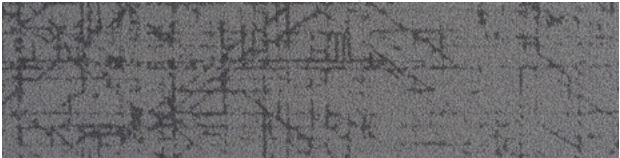
Color Sparkle 2-121071



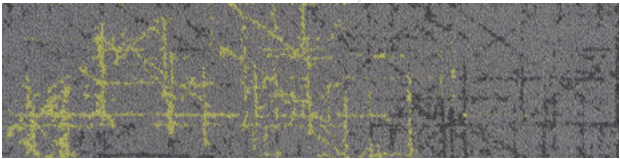
Colors



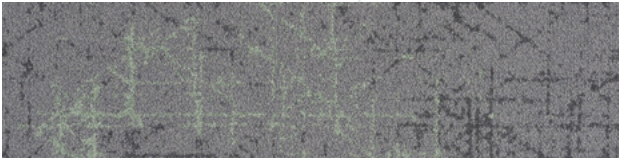
Ray Path 1-000



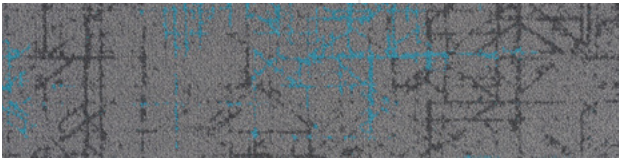
Ray Path 2-000



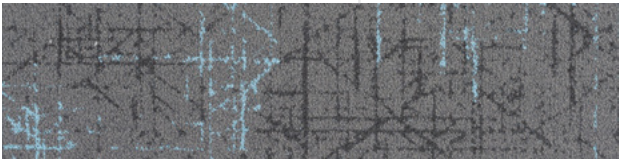
Light Stream 2-002



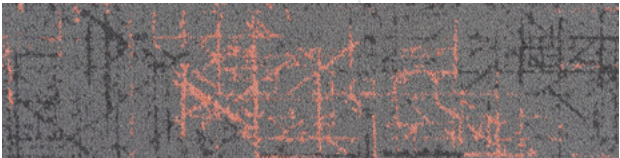
Light Stream 2-114



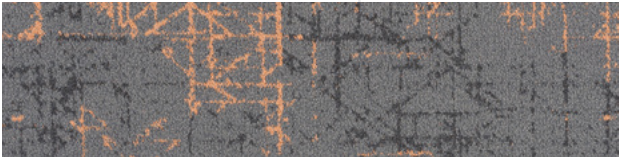
Light Stream 2-121



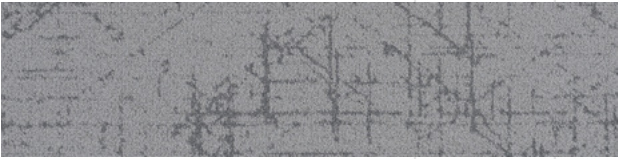
Light Stream 2-131



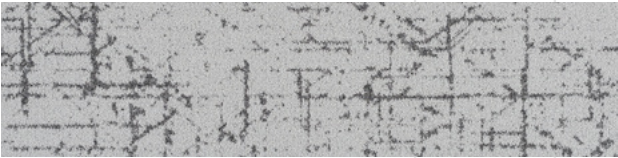
Light Stream 2-167



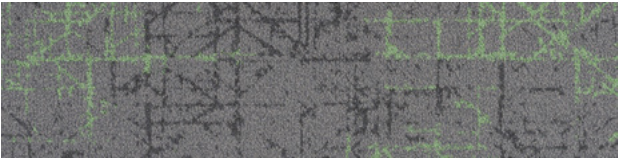
Light Stream 2-188



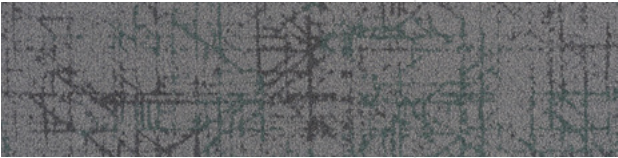
Ray Path 3-000



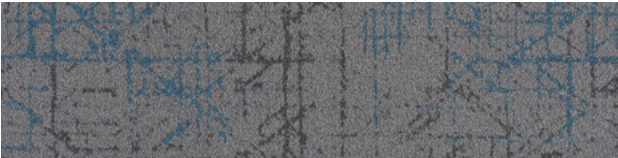
Ray Path 4-000



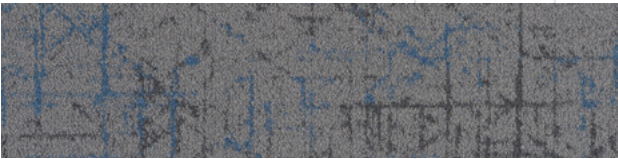
Light Stream 2-045



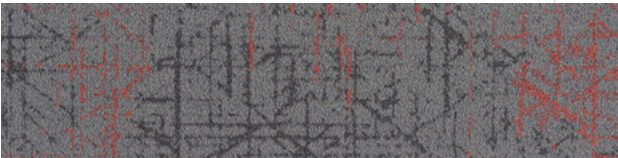
Light Stream 2-094



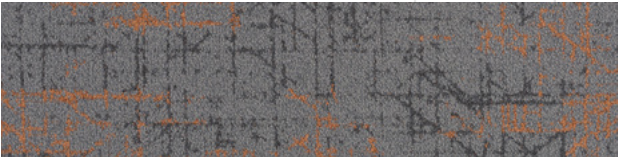
Light Stream 2-071



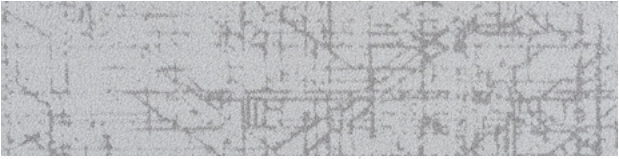
Light Stream 2-108



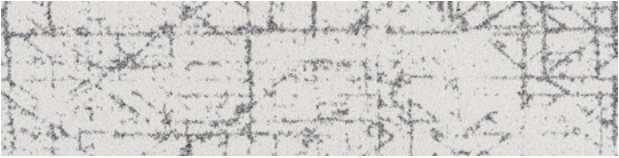
Light Stream 2-169



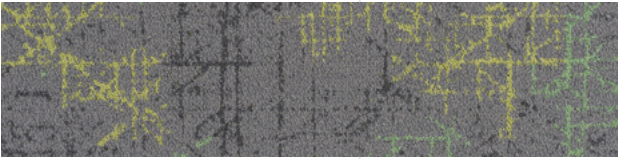
Light Stream 2-189



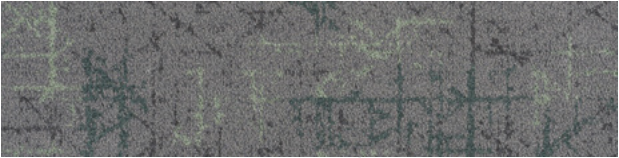
Ray Path 5-000



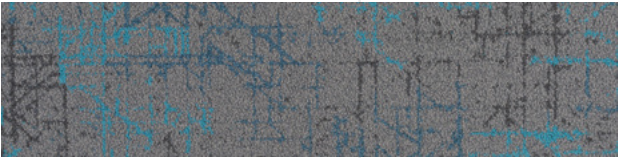
Ray Path 6-000



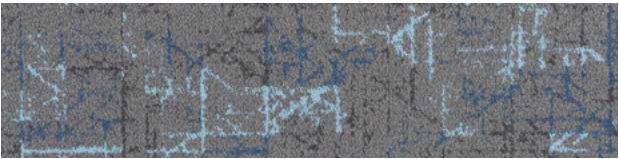
Color Sparkle 2-002045



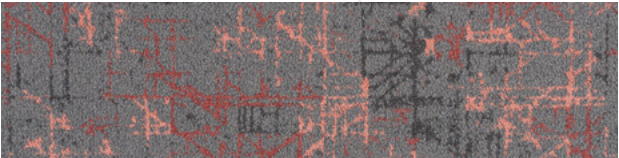
Color Sparkle 2-114094



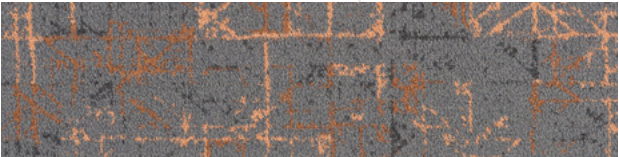
Color Sparkle 2-121071



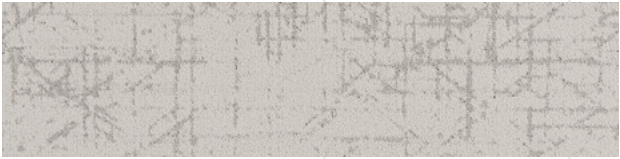
Color Sparkle 2-131108



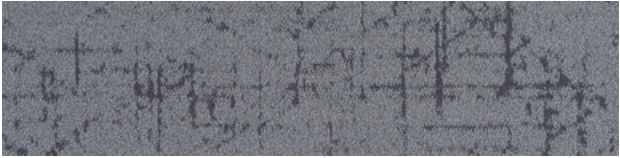
Color Sparkle 2-167169



Color Sparkle 2-188189



Ray Path 7-000



Ray Path 8-000



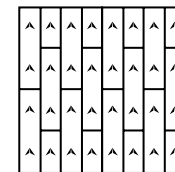


Ray Path 6-000

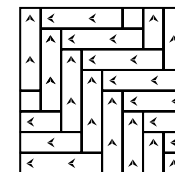
## Specifications

Style Name:	Ray Path; Light Stream; Color Sparkle
Construction:	Multi-level Loop
Fiber:	ECONYL® Regenerated Nylon by Aquafil
Gauge:	1/10"
Pile Weight:	21 OZ/yd <sup>2</sup> ; 21 OZ/yd <sup>2</sup> ; 22 OZ/yd <sup>2</sup>
Average Pile Height:	4.0 ± 0.5mm
Backing:	EcoAce-Bac® Pro
Tile size:	25cm*100cm
Total Thickness:	8.5 ± 0.5mm
Area of Use:	Commercial – Heavy Duty
Anti-microbial:	Ultra-Fresh Treatment (Available)
Flammability:	ASTM E 648 Class I, GB8624-2012 B1(C)
Smoke Density:	ASTM E 662 Less than 450, GB/T 8627-1999
Static Propensity:	AATCC-134≤3.5 KV, GB/T 18044-2008

## Installation Methods



Ashlar



Herringbone



Ray Path 1-000, Color Sparkle 2-167169



## Manufacture System

**SOLAR**  
made carpet

VOXFLO® builds its own solar power generation system and use clean energy to produce in a sustainable way.



An Environmental Product Declaration (EPD) tells the life cycle story of a product in a single, comprehensive report. The EPD provides information about a product's impact upon the environment, such as global warming potential, smog creation, ozone depletion and water pollution.



Administered by the Singapore Environment Council (SEC) since 1999, It is Singapore's leading environmental standard and certification mark with over 3800 unique products certified across 43 countries.

## Credits Contribution to:



LEED (Leadership in Energy and Environmental Design) is the most widely used green building rating system in the world. LEED certification is a globally recognized symbol of sustainability achievement and leadership.



Our manufacture system has been certified under ISO 9001, ISO 14001 and ISO 45001, which means with the management, production facility and the strict quality controls, VOXFLO® represents qualified and trusty products.



**EcoAce-Bac®**  
GLP No. : 100231

Green Label Plus is an independent testing program that identifies carpet, adhesives, and cushion with very low emissions of VOCs to help improve indoor air quality.



VOXFLO® recommends using its own carpet tile tackifier with rust inhibitor. It is an EC-1 PLUS certified adhesive.



Ultra-Fresh is a portfolio of antimicrobial treatments developed by Thomson Research Associates, Inc. Customer can choose this High-Performance Antimicrobial Technology.



WELL is the leading tool for advancing health and well-being in buildings globally. Register your office, building or other space to leverage WELL's flexible framework for improving health and human experience through design.



**Declare.**  
Red List Free

Declare is a transparency platform to share and find healthy building products. VOXFLO®'s EcoAce-Bac® Collection reach "Red List Free" grade.



CE marking indicates that a product has been assessed by the manufacturer and deemed to meet EU safety, health and environmental protection requirements.



Cradle to Cradle Certified® is the global standard for products that are safe, circular and responsibly made. It is to ensure the impact of their products on people and planet is a positive one.

# A SINGLE SUNBEAM IS ENOUGH TO DISPEL SHADOWS

Ray Path 5-000





**VOXFLOR®**

[www.voxflor.com](http://www.voxflor.com)

Shanghai **Headquarters**

T +86 021 62989325

Milano Creative Studio

T +39 3885863150

China **Branch Offices**

Beijing/ Guangzhou/ Shenzhen/ Xiamen

