



COUNTRY ROAD

COLLECTION



VOXFLO^R
www.voxflor.com

Shanghai **Headquarters**
T +86 21 62989325

Milano **Creative Studio**
T +39 3885863150

China **Branch Offices**
Beijing/ Guangzhou/ Shenzhen/ Xiamen



VOXFLO^R
passion and purpose

00.

OUR GOAL

Inspired by the poetry of global landscapes, **Country Road Collection** reflects the essence of the natural environment as authentic, timeless and deeply rooted in nature.

From dense woodlands to open deserts, from flowing rivers to expansive seas, the collection interprets the subtle transitions between **warm earth tones, cool aquatic hues and soft vegetal shades**. Structured through a refined linear texture, the design balances **continuity and variation**, combining grounded neutrals with moments of colour. Both rugged and composed, it expresses the **raw beauty** of the world around us while supporting contemporary **spatial design**. A system conceived to inspire, connect and define the built environment.

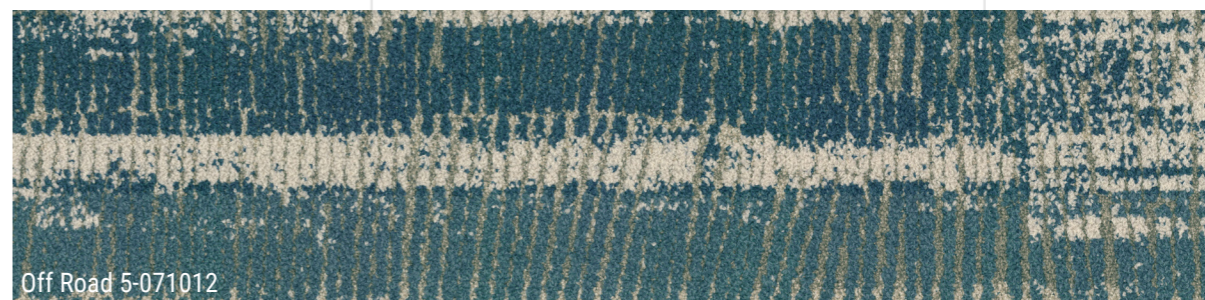
VOXFLO
MILANO CREATIVE STUDIO



Main Road establishes the foundation of the collection through a curated range of neutral tones: from deep charcoal and layered greys to greige, beige and muted brown. The palette reflects the natural colours of the road itself, creating a calm, continuous surface designed to anchor space with balance and versatility.



Off Road builds on the structure of Main Road introducing layered colour accents drawn from the Open Terrain palette. Each design blends two tones, creating subtle movement and variation. It allows colour to emerge organically, adding direction, contrast and visual interest while maintaining overall cohesion.



Open Terrain completes the set with a full chromatic expression. Featuring 16 solid colours, the palette spans blues, greens, reds and earthy browns inspired by natural environments. Designed to enhance visual impact, it brings clarity and intensity to the system while fully coordinated with the overall collection.



01.

COUNTRY ROAD

Formed by the elements, Country Road Collection reflects traces of wind, the quiet retreat of water, and the delicate fading of light. It holds the memory of the landscape, tying the collection together through enduring tones and an earthy, balanced design.

Country Road Collection is developed within a coordinated base-and-accent product system, sharing the same yarn and construction for perfect integration. The palette includes six base colors, three warm contemporary neutrals in beige and brown, and three essential commercial grays.

The true uniqueness lies in the accent stitch detailing. Each accent design features five tonal variations of the same color, creating exceptional chromatic depth and an unprecedented level of vibrancy and richness.

COUNTRY ROAD

THE WAY DEFINES
THE SPACE, AND COLOUR
DEFINES THE JOURNEY



Main Road 4-000000



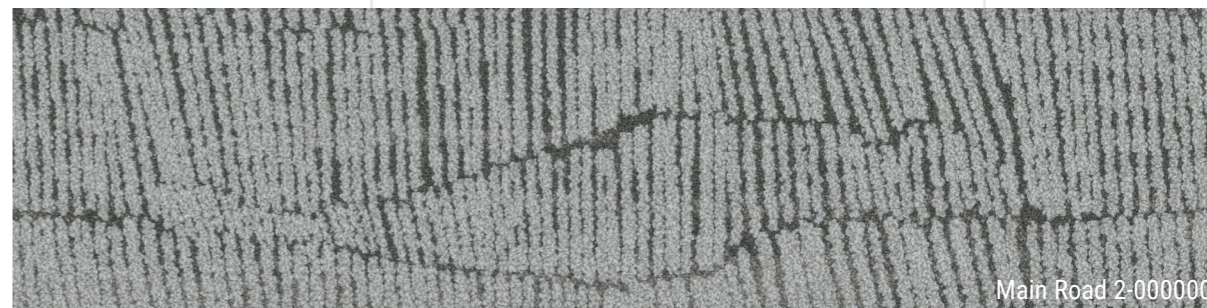
Guided by a commitment to environmental responsibility, the Country Road Collection is crafted using ECONYL[®], 100% **regenerated nylon** combined with EcoAce-Bac[®] Max backing, made from 100% **recycled content**. This **high-performance** composition represents one of the most sustainable solutions within the VOXFLO[®]R portfolio, balancing durability, design integrity and reduced environmental impact.



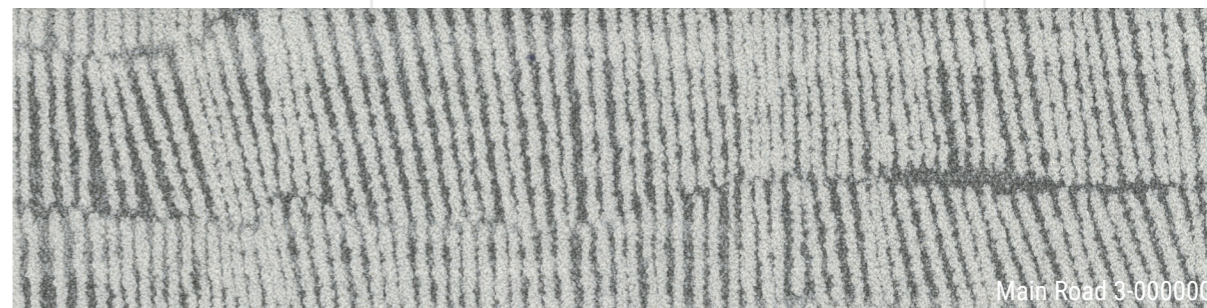
Main Road 4-000000



Main Road 2-000000
Main Road 3-000000



Main Road 2-000000



Main Road 3-000000



Main Road 6-000000

Main Road defines the collection's core through a refined linear texture, inspired by naturally worn paths. Its **balanced** rhythm and subtle tonal shifts create **seamless** continuity in elegantly creative spaces, offering a calm, structured surface that anchors space with **understated depth and architectural clarity**.



Main Road 6-000000

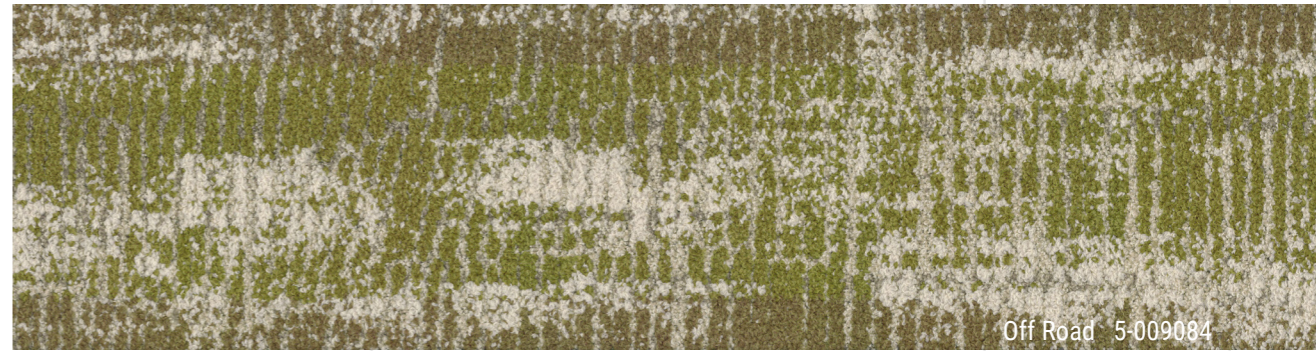




Together, Main Road and Off Road create a perfect mix of stillness and movement. Main Road anchors the space with its grounded, stable presence, while **Off Road introduces moments of color and fluidity** ideal for defining boundaries, guiding transitions, and shaping spaces without interruption.



Main Road 5-000000



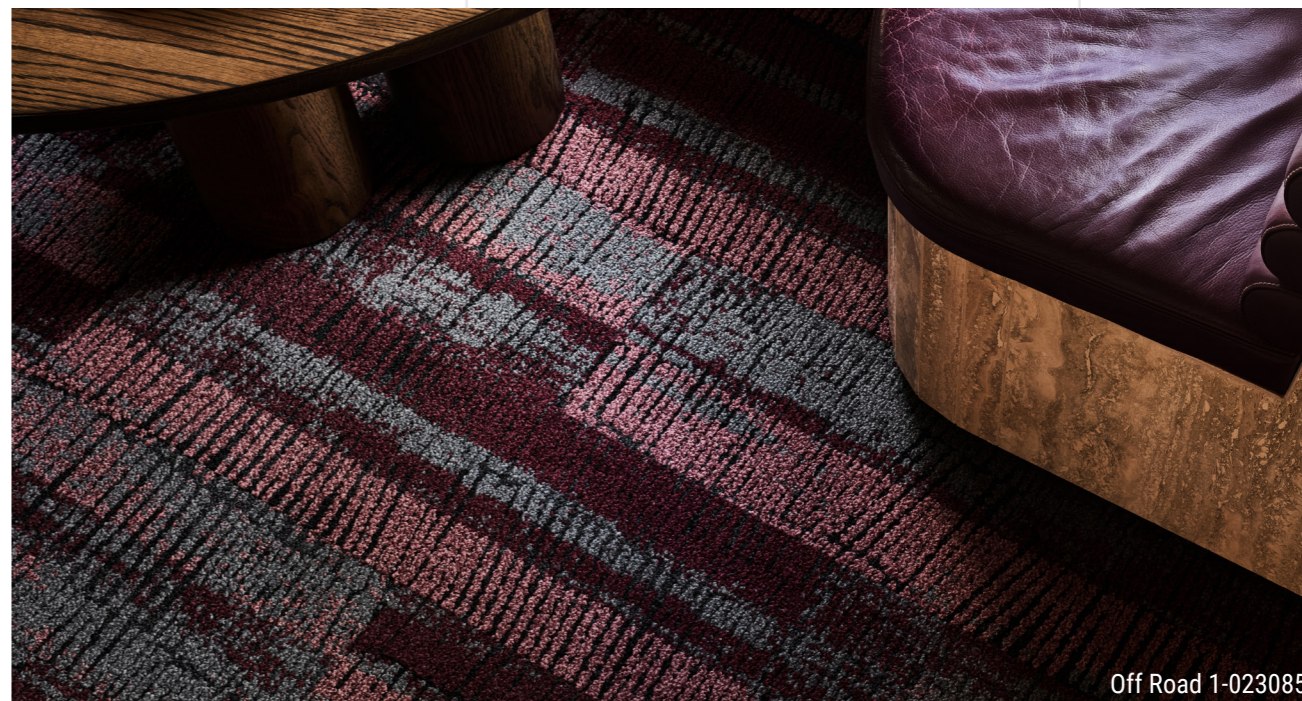
Off Road 5-009084



Main Road 5-000000
Off Road 5-009084



Main Road 1-000000
Off Road 1-023085



Off Road 1-023085



Main Road 5-000000
Off Road 5-191190



Off Road 1-067129
Eurogarden 129-D23



All colour accents within Country Road are directly drawn from VOXFLOr's **Eurogarden 202 palette**. This ensures precise colour consistency and **clear specification**, while enabling seamless integration between the two collections, allowing coordinated layouts and flexible combinations within a unified, color-driven flooring system.



Open Terrain completes the collection as a **full-colour expression**, seamlessly integrated within the system. It intensifies the palette with confident, nature-inspired tones, adding energy and depth. Exactly as a side of the Main Road, Open Terrain amplifies colour, creating a more **dynamic and expressive** spatial language.



Off Road 5-114050
Open Terrain 114, 050



Off Road 5-114050
Open Terrain 114, 050



Main Road 1-000000
Off Road 1-189081
Open Terrain 189



Off Road 5-071012
Open Terrain 071

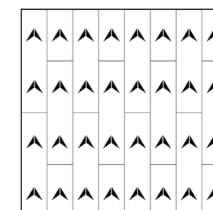


Off Road 5-071012
Open Terrain 071

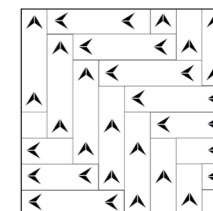


SPECIFICATIONS & INSTALLATION

Style Name:	Main Road; Off Road; Open Terrain
Construction:	Multi-Level loop
Fiber:	ECONYL® Regenerated Nylon by Aquafil (Main Road; Off Road) VOXFLOOR® Certified Nylon (Open Terrain)
Gauge:	1/10"
Stitches:	10 per inch
Pile Weight:	24 OZ/yd ² (Main Road) 26 OZ/yd ² (Off Road; Open Terrain)
Average Pile Height:	4.5 ± 0.5mm
Backing:	EcoAce-Bac® Max
Tile size:	25cm*100cm
Area of Use:	Commercial – Heavy Duty
Anti-microbial:	Ultra Fresh Treatment (Available)
Flammability:	ASTM E648 Class I, GB8624-2012 B1(C)
Smoke Density:	ASTM E662 Less than 450, GB/T 8627-1999
Static Propensity:	AATCC-134≤3.5 KV, GB/T 18044-2008



Ashlar



Herringbone



Off Road 1-048092

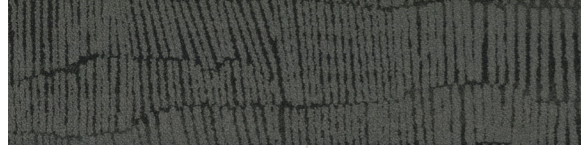


Off Road 1-048092

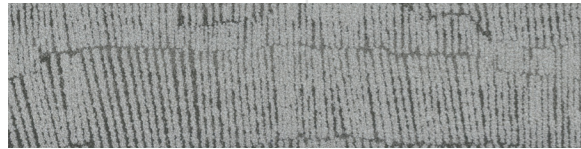
03.

COLORS

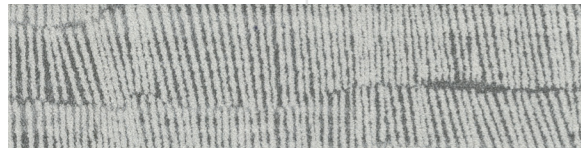
MAIN ROAD



Main Road 1-000000



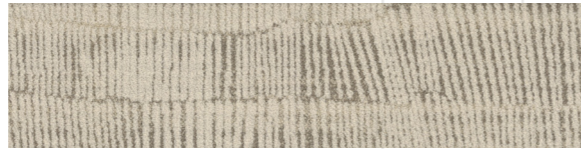
Main Road 2-000000



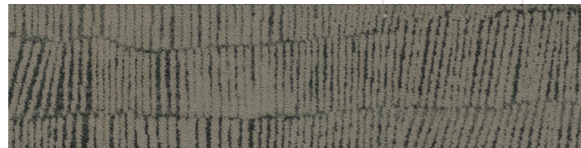
Main Road 3-000000



Main Road 4-000000

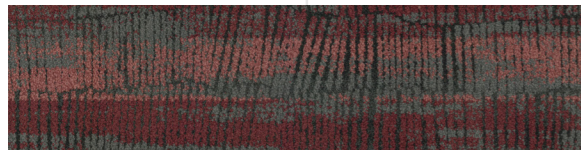


Main Road 5-000000

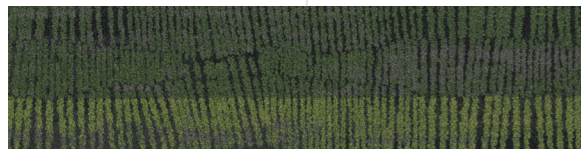


Main Road 6-000000

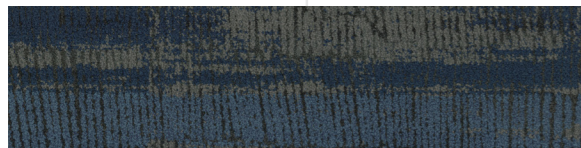
OFF ROAD



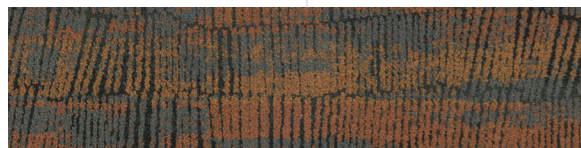
Off Road 1-023085



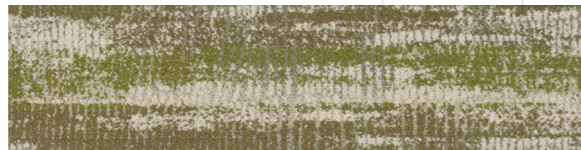
Off Road 1-048092



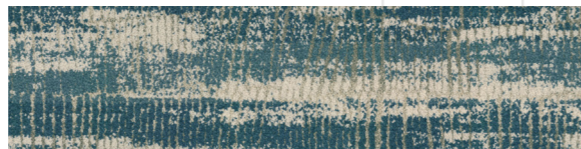
Off Road 1-067129



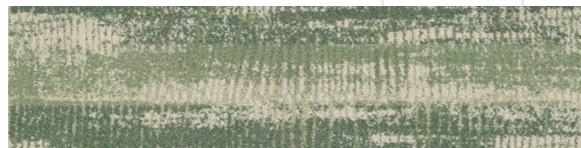
Off Road 1-189081



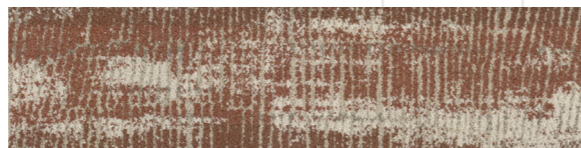
Off Road 5-009084



Off Road 5-071012

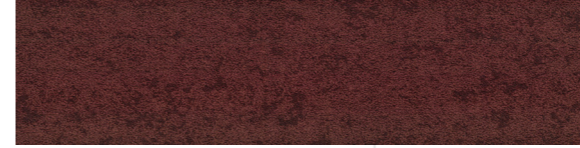


Off Road 5-114050

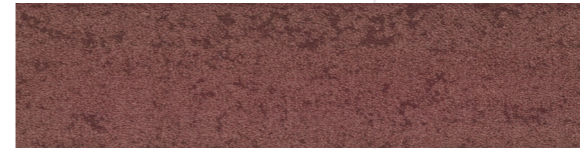


Off Road 5-191190

OPEN TERRAIN



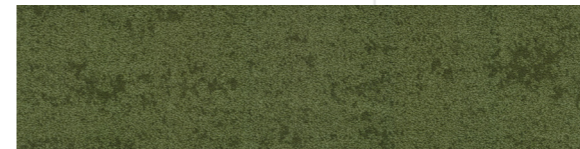
Open Terrain 023



Open Terrain 085



Open Terrain 048



Open Terrain 092



Open Terrain 067



Open Terrain 129



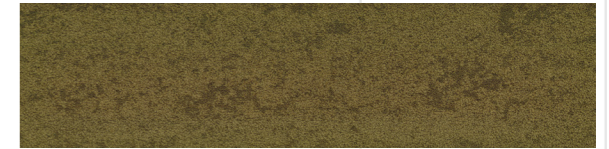
Open Terrain 189



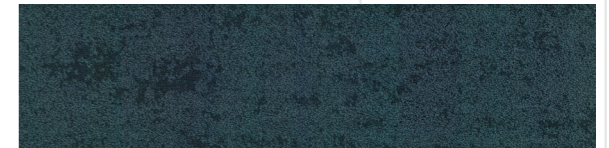
Open Terrain 081



Open Terrain 009



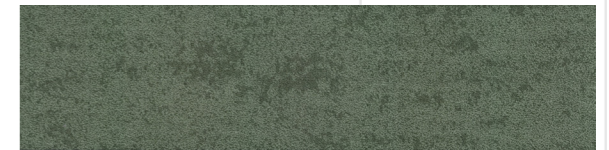
Open Terrain 084



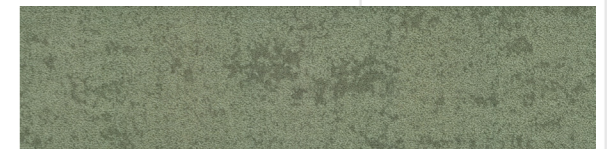
Open Terrain 071



Open Terrain 012



Open Terrain 114



Open Terrain 050



Open Terrain 190



Open Terrain 191

Manufacture System

SOLAR made carpet

VOXFLOOR® constructs its solar power generation system, utilizing clean energy for sustainable production.



An Environmental Product Declaration (EPD) tells the life cycle story of a product in a single, comprehensive report. The EPD provides information about a product's impact upon the environment, such as global warming potential, smog creation, ozone depletion and water pollution.



Administered by the Singapore Environment Council (SEC) since 1999, It is Singapore's leading environmental standard and certification mark with over 3800 unique products certified across 43 countries.

Credits Contribution to:



LEED (Leadership in Energy and Environmental Design) is the most widely used green building rating system in the world. LEED certification is a globally recognized symbol of sustainability achievement and leadership.



ISO 14064
ISO 14067
ISO 14068-1

VOXFLOOR® tracks and reduces greenhouse gas emissions (ISO 14064), minimizes the carbon footprint of carpet tiles (ISO 14067), and achieves carbon neutrality through renewable energy and offsetting (ISO 14068-1).



ISO 45001:2018
ISO 9001:2015
ISO 14001:2015

ISO 9001, ISO 14001, ISO 45001 certified, VOXFLOOR® ensures reliable, high-quality manufacturing.



Eco-Ace-Bac® Collection
GLP No. : 100231

Green Label Plus is an independent testing program that identifies carpet, adhesives, and cushion with very low emissions of VOCs to help improve indoor air quality.



CE marking indicates that a product has been assessed by the manufacturer and deemed to meet EU safety, health and environmental protection requirements.



Ultra-Fresh® is a portfolio of antimicrobial treatments developed by Thomson Research Associates, Inc. Customer can choose this High-Performance Antimicrobial Technology.



WELL is the leading tool for advancing health and well-being in buildings globally. Register your office, building or other space to leverage WELL's flexible framework for improving health and human experience through design.



Declare.

Declare is a transparency platform to share and find healthy building products. VOXFLOOR's EcoAce-Bac® Collection reach "Red List Free" grade.

ECONYL®

Thanks to its regenerated fiber structure and advanced recycling technology, ECONYL® yarn delivers durability and design flexibility while reducing environmental impact, transforming waste into high-performance nylon for a more responsible and circular manufacturing process.



Cradle to Cradle® Certified is the global standard for products that are safe, circular and responsibly made. It is to ensure the impact of their products on people and planet is a positive one.



YOUR JOURNEY BEGINS HERE